

JONATHAN LEEMING
SPEAKER • AUTHOR • CONSERVATIONIST

Scorpion Nature Explorer

Scorpion Identification



Distribution & Shelter

Scorpions are not randomly distributed throughout the environment. They live in places that align to their lifestyles and where their prey can be found. The location of a scorpion such as on the ground, in a burrow, on vegetation or in a tree, helps with identification.



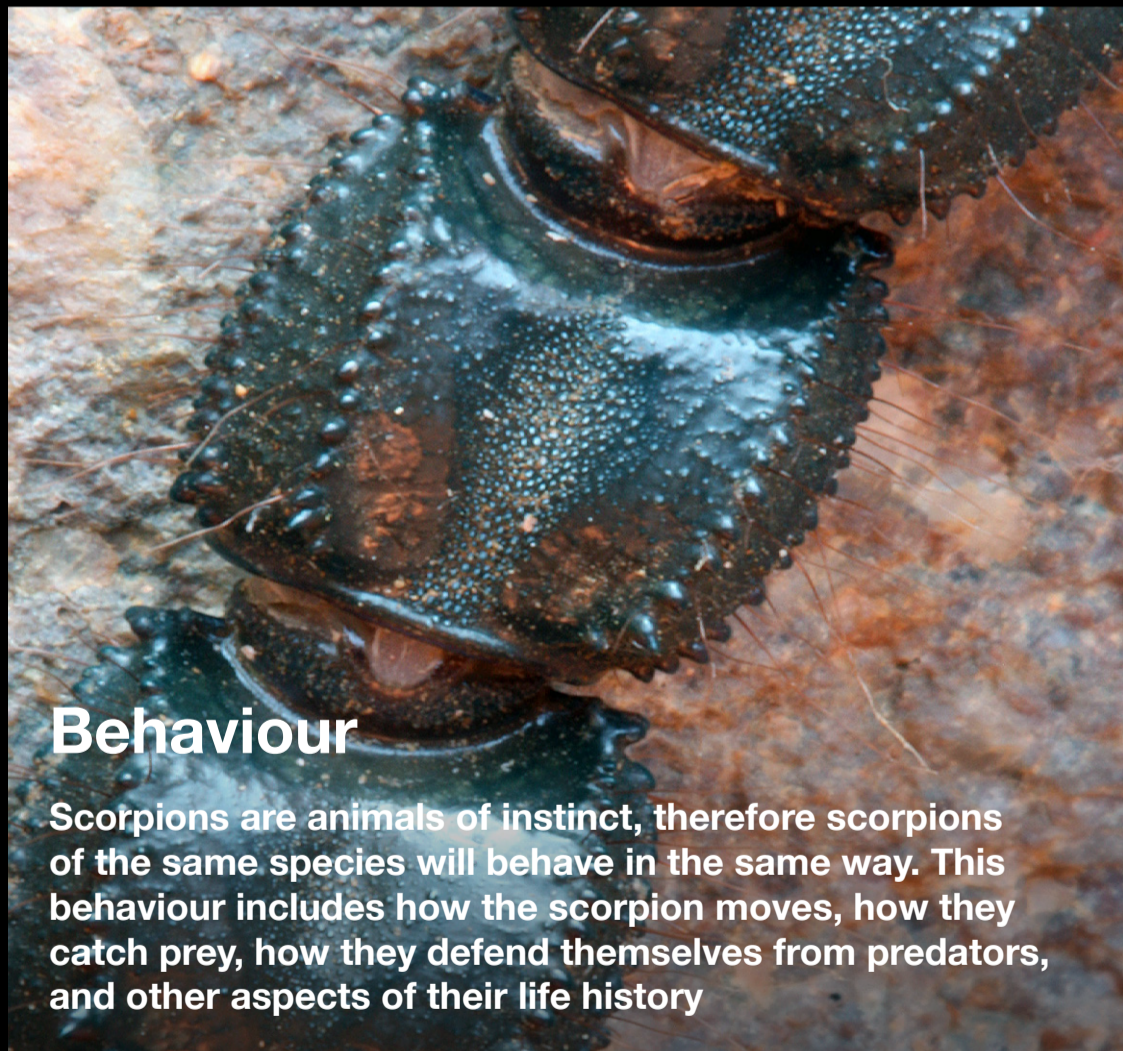
General Size & Shape

Although scorpions adhere to same general body plan, their size and shape differ greatly. Southern Africa is home to small species of scorpion that have an adult size of only 16mm, as well as the longest scorpion in the world, attaining a length of 21cm



Colouration & Anatomy

Most scorpions are nocturnal, therefore colouration is not as important in their life when compared to diurnal animals. Colouration is constant for a species with a small distribution. For scorpions with wide distributions, colouration may vary from place to place. Some scorpions have unique anatomical features that can be used for identification



Behaviour

Scorpions are animals of instinct, therefore scorpions of the same species will behave in the same way. This behaviour includes how the scorpion moves, how they catch prey, how they defend themselves from predators, and other aspects of their life history

The Scorpion Nature Explorer is written in a simple and easy to understand language. Suitable for all faiths and aligned to the Cambridge and CAPS curriculum, making it ideal for home schools. There are multiple choice questions, speech assignments, practical field work activities, presentation assignments and fun puzzles. It has been written to be used while on holiday in a national park or game reserve, or at home in your back garden. Visit www.Scorpions.co.za/nature-explorer for free downloads.

